

# AUGUST NEWSLETTER

The NOLA-PS Early Learning and Childcare Newsletter is a new resource for families and community members in New Orleans. It will offer updates on early childhood education initiatives, policy changes, and resources for parents and caregivers. The newsletter will also inform the community about upcoming events, workshops, and professional development opportunities, ensuring all stakeholders can support the city's youngest learners.



## August

Sunday	Monday	Tuesday	Wednesday	Thursday	Friday	Saturday
				1	2	3
4	5	6	7	8	9	10
11	12	13	14	15 Verification Event 10-2 @ Wilcox SUNO	16	17
18	19	20	21	22	23	24
25	26	27	28 Virtual Verification 10-2	29	30	31

# STAFF SPOTLIGHT

Staff Spotlights is an initiative that celebrates the outstanding work of staff members from partner organizations throughout the city. This program aims to recognize and showcase the dedication and achievements of these individuals in supporting early childhood education.



## DANIELLE FOSTER

Little Scholars Academy staff spotlight features Mrs. Danielle Foster. She is a veteran staff member of 6 years with an Ancillary Certificate who performs well for class observations. She presents a highly loving energy to all students and family while assisting her coworkers with their needs to better enhance their students' development.



## JAYDE LARSON-RODRIGUEZ

Jayde is a Pre-K teacher at KIPP Believe Primary and leads PK professional development for all 5 KIPP New Orleans Schools. Jayde recently earned the designation of 'Distinguished Teacher' at KIPP New Orleans putting her in the top 10% of performance of all teachers in our network. 90% of her students are graduating PK already surpassing the reading goals set for kindergarten! Parents should choose KIPP Believe or any KIPP New Orleans School for excellence in reading instruction and a joyful and inclusive culture—just like they see in Ms. Larson-Rodriguez's classroom.



## BRIANNA PITTS

After being in childcare for only two years, Ms. Brianna has reached many milestones. Being her first job in the childcare field, Ms. Brianna came in and took the initiative to grow as a teacher. She did not let her minimum experience stop her from reaching her goals. Recently, she has received her CDA and scored a 6.25 on CLASS observation.



## AYANNA BRIDGES

Ms. Bridges is a Pre-k teacher at Pierre A. Capdau STEAM School who fosters a caring and inclusive environment where learning is meaningful, engaging, and joyful. While Ms. Bridges is a veteran educator, this is her first-year teaching Pre-K, with a 6.58 CLASS Score. Capdau is the first STEAM focused school in New Orleans providing our youngest scholars with STEAM activities and early exposure to State of the Art Technology.

# JUNE VERIFICATION EVENT HIGHLIGHTS

We are excited to share the outcomes of our recent Summer Verification Events. Here's a snapshot of the participation and feedback from our community:

## Overall Satisfaction:

- Very Satisfied: 76% of respondents
- Somewhat Satisfied: 20% of respondents
- Somewhat Dissatisfied: 4% of respondents

## Likelihood to Recommend:

- Highly Likely: 60% of respondents
- Likely: 32% of respondents
- Somewhat Likely: 8% of respondents

## Respondent Testimonials:

- "She took her time waiting on me to upload documents."
- "The assistants were very attentive to my child's qualifying needs as it would be vital for placement."
- "Honestly I was so nervous every one there made me feel like family."
- "Very helpful with process. I was given direct contact information if I had any concerns or questions."

These testimonials reflect our commitment to providing a supportive and efficient experience for all our families. Don't miss out on the opportunity to attend a future event. Stay tuned for more details on our next events!

**\*July results will be placed in the September newsletter.\***

## COMMUNICATION FOCUS GROUPS


**NOLA-PS aims to develop a communications strategy that is comprehensive, transparent, and accessible.**

**We want our families to be better informed about the complete spectrum of early learning and childcare center/school options and policies .**

**In an effort to work towards a more community inclusive process, we would like to host focus groups and conduct that will assist us in finding ways to communicate in a manner that is beneficial for the families of Orleans Parish.**

**Your involvement is crucial in helping us build a communication strategy that truly meets the needs of our diverse community.**

**Keep an eye out for more information on how you can get involved in the coming weeks. Together, we can make sure that every family in Orleans Parish has the information they need to make the best choices for their children's education and care.**



# NOLA-PS EARLY LEARNING & CHILDCARE STAFF



# TEAM



**Jonika Julian-Harris**  
Executive Director of Early  
Childhood Education

**Halltonya Kelly**  
Director of Early  
Childhood Operations

**Prisca Washington**  
Director of Early Childhood  
Partnerships & Support

**Jacquenette Green**  
Early Childhood  
Compliance Manager

**Khiry Jones, Sr.**  
Director of Early Childhood  
Outreach & Family Access

**Melissa Mann**  
Student Enrollment  
Assistant

**Trishanna Celestine**  
Student Enrollment  
Assistant

**Henry Smith**  
Student Enrollment  
Assistant

**Ashley Whitmore**  
Student Enrollment  
Assistant

**Nicole Bridgewater**  
Student Enrollment  
Assistant

**Whitney Jase**  
Student Enrollment  
Assistant

**Akelah Sherman**  
Student Enrollment  
Assistant



**Welcome La'Nita Harris to the  
NOLA-PS Early Learning and  
Childcare Team!!!**



We are delighted to announce that **La'Nita Harris** has joined the NOLA-PS  
Early Learning and Childcare team!

**La'Nita** brings a wealth of experience and a deep commitment to early  
childhood education, making her a perfect fit for our mission to support  
families!



# ANNOUNCEMENTS

## Early Childhood Application Verification Event



WILCOX ACADEMY OF EARLY LEARNING

August 15, 2024  
10 AM - 2 PM

Wilcox Academy @ SUNO  
SUNO - College of Education and Human  
Development  
Room #177  
6701 Press Drive  
New Orleans, LA 70122



### Directions:

- Once you get on campus, proceed down Press Drive past the main Campus
- Crossover Leon C Simon.
- Turn right at the stop sign.
- The building will be located on the left hand side.
- Enter through the double doors, room #177 is on the left



## Application Verification Event



Virtual Event  
August 28, 2024  
10 AM - 2 PM

Registration Required



This is an opportunity to receive assistance to fully complete and verify your application.

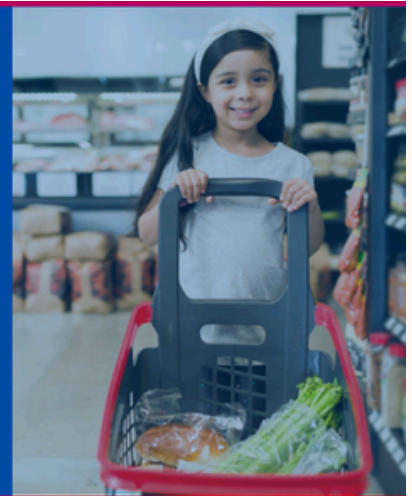
Check <https://enrollnolaps.com/resources#UpcomingEvents> for information on what to bring.



Creating safe, innovative spaces  
for every child in New Orleans

## ECHO KIDSPACE GRANT

Grants up to \$50K for community  
partners to establish or expand child-  
friendly spaces in New Orleans.  
Applications for projects, both small  
and large-scale are welcomed.



### THE ECHO KIDSPACE GRANT

- Promotes inviting, safe, engaging spaces that support play and socialization
- Creates spaces that promote cognitive, social, physical development and encourage independence
- Supports the purchase of play equipment, interactive play features and installations, and child-sized furniture

SCAN FOR MORE  
INFORMATION



DEADLINE FOR PRE-APPLICATION SCREENING:  
SATURDAY, AUGUST 10, 2024  
DEADLINE FOR APPLICATION:  
THURSDAY, AUGUST 15, 2024

The Early Childhood Opportunity Fund (ECHO Fund) is Agenda for Children's innovative grant program that seeks to increase access to high-quality early care and education for children from birth through age four by directly funding the needs of early childhood programs.



### Greetings Center/Schools Directors!

We need your assistance in updating your profiles in our "Explore Schools" tool on our website. Please take a moment to respond to these 5 quick questions/prompts. Having fresh information is key to making your program stand out to families. This information would also help us highlight centers in our monthly newsletter and on our social media.

Please send all responses to [enrollec@nolapublicschools.com](mailto:enrollec@nolapublicschools.com).

- What is the name of your center or school?
- What is the name of the director at your center or school?
- What makes your center/school unique?
- Please attach/upload a picture of your logo.
- Please attach/upload a picture of the (front) outside of your center or school.

Again, please send responses to [enrollec@nolapublicschools.com](mailto:enrollec@nolapublicschools.com).

